

H.B. Wallace Reserve Trail Map

The H.B. Wallace Reserve is 95 acres of undeveloped forest with over 2.5 miles of trails in Green Mountain Falls and Chipita Park. The system of trails on the reserve was developed by Henry Browne Wallace, son of former vice president Henry Agard Wallace. H.B., as he was known, generously shared these trails with the residents in Green Mountain Falls and Chipita Park. He left a proud family legacy through his efforts to preserve the natural beauty of the H.B. Wallace Reserve.

In 2008 the **Historic Green Mountain Falls Foundation** purchased these 95 acres from the H.B. Wallace Estate. In 2009 the Kirkpatrick Trail was built to effectively connect the private trails on the Reserve to the over 5 miles of public trails in the Ute Pass area. Dedicated in 2010 the Kirkpatrick Trail is named to honor the Kirkpatrick family, long time summer residents of Green Mountain Falls.

The Historic Green Mountain Falls Foundation is committed to the preservation of open space, parks, trails and projects that enhance the unique qualities of Green Mountain Falls and Chipita Park. The Foundation was formed in 2006 and is advised by a Board of Governors appointed by the **Kirkpatrick Family Fund** an affiliated fund at the Oklahoma City Community Foundation.

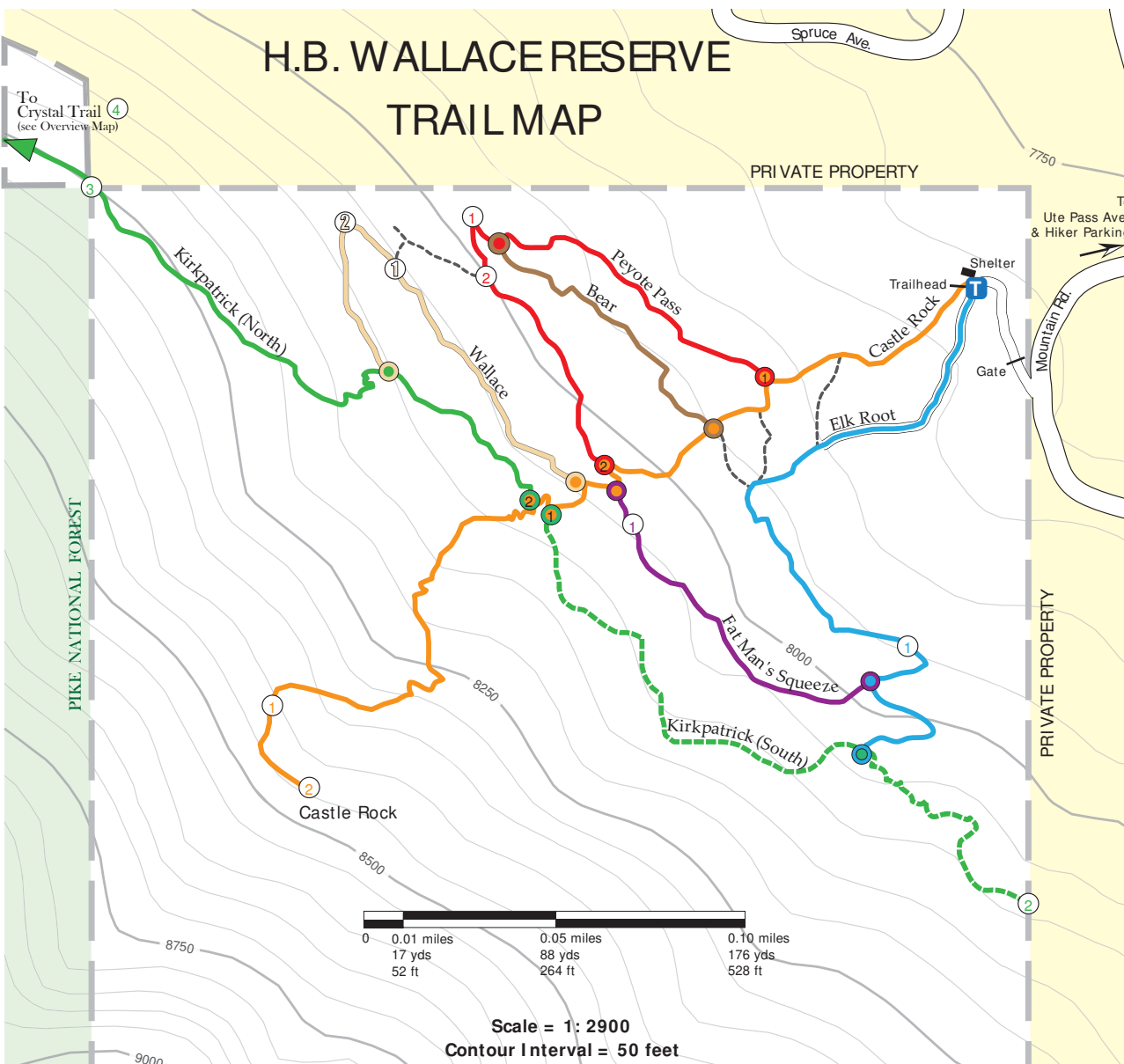
For more information please visit: www.KirkpatrickFamilyFund.org

HIKING ONLY
NO Fires, Smoking, Camping, Shooting, ATV's, Motorbikes

Directions to the H.B. Wallace Reserve

From U.S. Hwy. 24 (approaching from Colorado Springs), take the second Green Mtn. Falls/Chipita Park exit (a left exit). Follow Green Mtn. Falls Rd. until it turns into Ute Pass Ave. Go through Green Mtn. Falls and use the hiker parking lot on the east side of the intersection at Ute Pass Ave. and Mountain Road. Walk up Mountain Road for about 0.5 miles to the H.B. Wallace Reserve on the right (marked by a pull-out and a sign).

H.B. WALLACE RESERVE TRAIL MAP



Trail Difficulty Ratings:
 Trail difficulty levels are subjective. These criteria are based on an average, healthy adult who is moderately fit. The primary criteria used to determine the level of difficulty were based on the following hiking parameters: steepness of terrain, elevation gain, length of trail, altitude and trail surface (packed dirt, loose skree, boulders, etc.). Please hike at your own risk.

● Easy
 ● Easy to Moderate
 ● Moderate
 ● Moderate to Difficult
 ● Difficult

Bear Trail

Trail Length: 0.09 miles one-way (from ● to ●)
Elevation Gain/Loss: + 37'; - 4' (one-way)
Trail Difficulty: ●
Waypoints:
 ● @ 0.00 Mi. - Intersection of Castle Rock & Bear.
 ● @ 0.09 Mi. - Intersection of Bear & Peyote Pass.

Castle Rock Trail

Trail Length: 0.37 miles one-way (from T to 2)
Elevation Gain/Loss: +612'; - 0' (one-way)
Trail Difficulty: ●
Waypoints:
 T @ 0.00 Mi. - Trailhead
 1 @ 0.07 Mi. - Intersection with Peyote Pass on the right.
 ● @ 0.10 Mi. - Intersection with Bear on the right.
 2 @ 0.14 Mi. - Intersection with Peyote Pass on the right.
 ● @ 0.15 Mi. - A large boulder is straight ahead, go right around the boulder. Fat Man's Squeeze is to the left.
 ● @ 0.16 Mi. - T-intersection with Wallace on right, go left.
 1 @ 0.17 Mi. - T-intersection with Kirkpatrick (South) on left, go right.
 2 @ 0.18 Mi. - Intersection with Kirkpatrick (North) on right, go straight.
 1 @ 0.33 Mi. - Base of Castle Rock.
 2 @ 0.37 Mi. - Summit of Castle Rock (elevation = 8,400').

Elk Root Trail

Trail Length: 0.25 miles one-way (from T to ●)
Elevation Gain/Loss: + 217'; - 0' (one-way)
Trail Difficulty: ●
Waypoints:
 T @ 0.00 Mi. - Trailhead
 1 @ 0.18 Mi. - Y-intersection, go right. In a short distance there is another informal trail on the left.
 ● @ 0.20 Mi. - Intersection with Fat Man's Squeeze on the right. In a short distance there is an informal trail on the left.
 ● @ 0.25 Mi. - Intersection with Kirkpatrick (South).

Fat Man's Squeeze Trail

Trail Length: 0.12 miles one-way (from ● to ●)
Elevation Gain / Loss: + 17'; - 39' one-way
Trail Difficulty: ●
Waypoints:
 ● @ 0.00 Mi. - Intersection at a large boulder. Go left for Fat Man's Squeeze.
 1 @ 0.02 Mi. - Squeeze between 2 boulders in the trail (Fat Man's Squeeze).
 ● @ 0.12 Mi. - Trail ends at the intersection with Elk Route which goes both right and left.

Kirkpatrick Trail (South)

Trail Length: 0.24 miles one-way (from 1 to 2)
Elevation Gain/Loss: + 63'; - 89' (one-way)
Trail Difficulty: ●
Waypoints:
 1 @ 0.00 Mi. - First intersection with Castle Rock and Kirkpatrick (South).
 ● @ 0.16 Mi. - Intersection with Elk Route on the left.
 2 @ 0.24 Mi. - Kirkpatrick (South) ends at property line.

Kirkpatrick Trail (North)

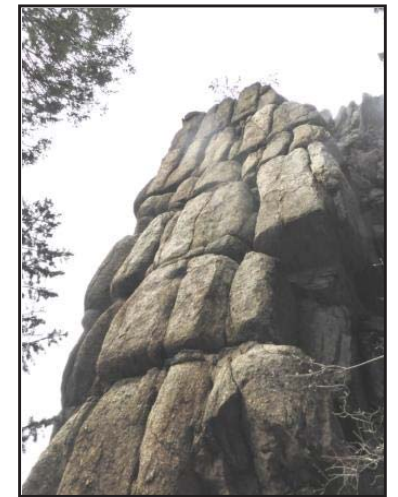
Trail Length: 0.38 miles one-way (from 2 to 4)
Elevation Gain/Loss: + 176'; - 144' (one-way)
Trail Difficulty: ●
Waypoints:
 2 @ 0.00 Mi. - Second intersection with Castle Rock and Kirkpatrick (North).
 ● @ 0.07 Mi. - Y-intersection with Wallace Trail.
 3 @ 0.21 Mi. - Northwest corner of Wallace Reserve property.
 4 @ 0.38 Mi. - Intersection with Crystal Trail (see Overview Map).

Peyote Pass Trail

Trail Length: 0.20 miles one-way (from 1 to 2)
Elevation Gain/Loss: + 103'; - 0' (one-way)
Trail Difficulty: ●
Waypoints:
 1 @ 0.00 Mi. - Intersection with Castle Rock and Peyote Pass.
 ● @ 0.10 Mi. - Intersection with Peyote Pass and Bear.
 1 @ 0.11 Mi. - Sharp left turn. Closed informal trail to the right.
 2 @ 0.12 Mi. - Intersection with Wallace connector trail which goes sharply to the right.
 2 @ 0.20 Mi. - Y-intersection at Castle Rock.

Wallace Trail

Trail Length: 0.17 miles one-way (from ● to ●)
Elevation Gain/Loss: + 47'; - 0' (one-way)
Trail Difficulty: ●
Waypoints:
 ● @ 0.00 Mi. - Y-intersection, go right onto Wallace Trail.
 1 @ 0.10 Mi. - Y-intersection, go left here (right is a connector to Peyote Pass).
 2 @ 0.12 Mi. - Sharp left turn in trail.
 ● @ 0.17 Mi. - Trail ends at intersection with Kirkpatrick (North).



Castle Rock